

780 new residential units in Leiden: Precision in Prefabricated Construction

Precast concrete elements supported and aligned with TITAN push-pull props



With the two blocks of flats, Zirro and Schouls, a total of 780 modern residential units are currently being constructed in buildings up to twelve storeys high in Leiden in the Netherlands. The project is part of the comprehensive transformation of the Lammerschans Triangle, in which a former industrial area is being transformed step by step into a lively urban district. In the future, living, working and leisure will be combined here – supported by modern, high-quality construction and sustainable technology.

The challenge

The project is being carried out mainly with precast concrete elements, which ensures a smooth and fast construction process and high quality standards. The numerous precast concrete elements and columns must be supported stably and securely to prevent them from tilting during installation, although the different weights and dimensions of the elements as well as the exact coordination between the assembly process and the support require special planning.

The solution

TITAN RSK push-pull props are used to support the prefabricated components. For decades, the push-pull props have been extremely useful on construction sites of all types and sizes. TITAN RSK push-pull props have excellent tensile and compressive strength and are attached to the floor and wall via the swivel ends. The movable swivel ends allow precise adjustment of inclined and angular positions – perfect for the different requirements of the various prefabricated components. The spindles and handles on both sides allow easy handling and adjustment with millimetre precision.

Once construction is completed, the new flats should be available to potential tenants as early as 2026.

Project:

Zirro and Schouls housing project, Leiden, Netherlands

Construction period:

April 2025 (first delivery)

Client:

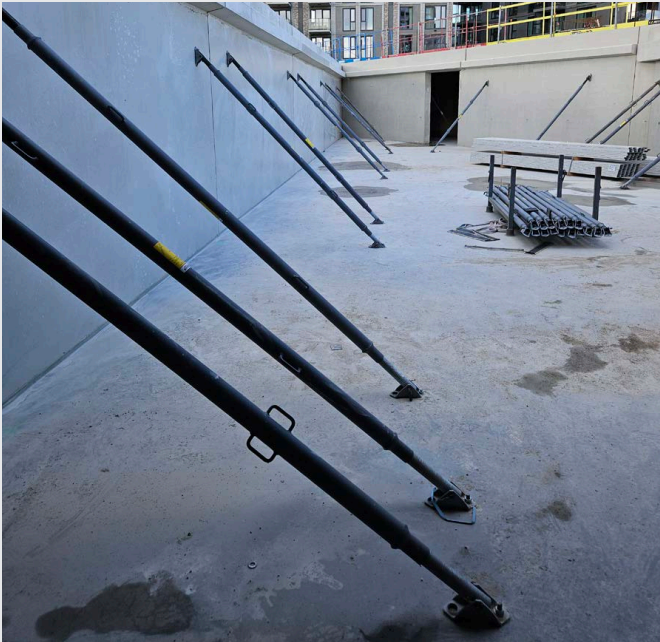
Gejamongt B.V. Veenendaal

Contractor:

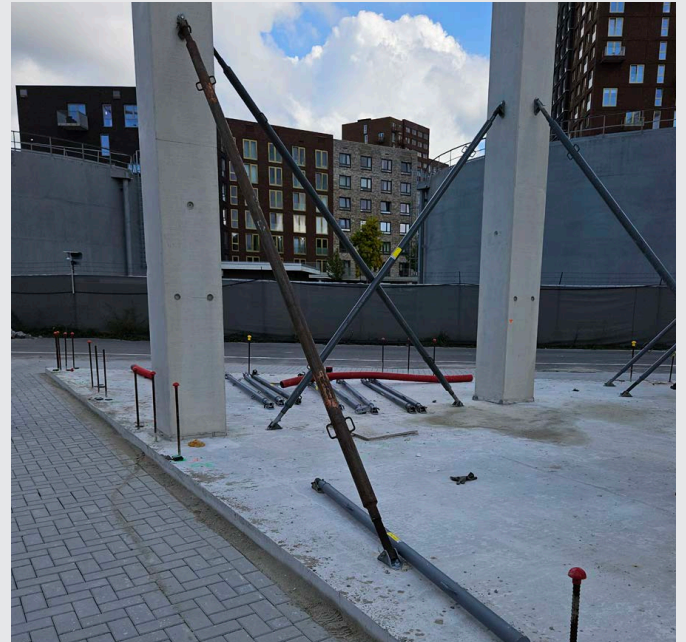
Ten Brinke Group B.V.

Products used:

- TITAN RSK push-pull props
Sizes 3, 4, 6 and 8



The movable swivel ends and spindles on both sides of the push-pull props enable quick and precise alignment



Support for the precast columns on the ground floor (higher than the other storeys)



Overview of the precast walls in the basement



Use of the push-pull props as a thread element. All TITAN push-pull props have high tensile and compressive strength

Would you like to find out more about the TITAN push-pull props?

We would be happy to advise you about your project. Simply get in touch with us. We look forward to hearing from you.